

THERMOSPAN™ 125 INSULATED OVERHEAD DOORS

GARAGE DOORS & OPENERS

PROJECT:

CONTRACTOR:

ARCHITECT:

DOOR DISTRIBUTOR:

DRAWING No.: _____
 SHEET No.: _____ OF _____
 DRAWN BY: _____ DATE: _____

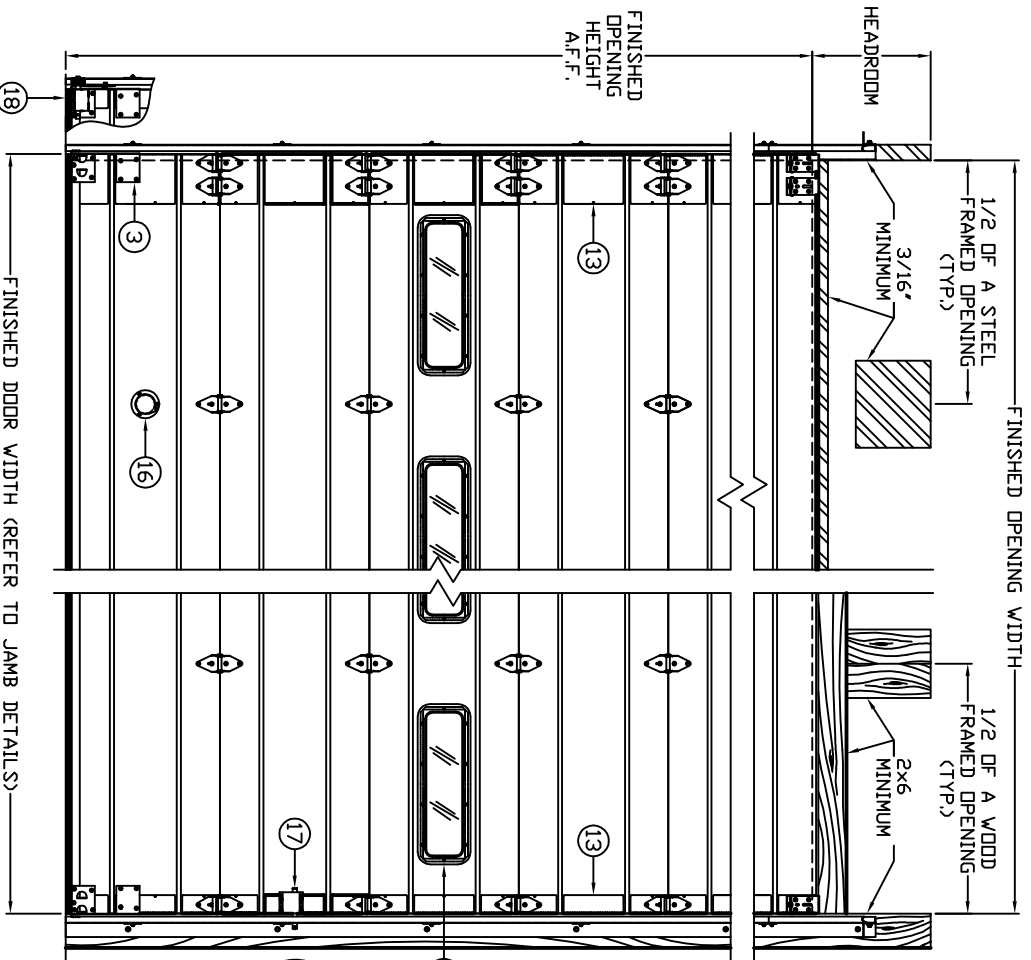
FRAMING NOTE: WAYNE-DALTON CORP. DESIGN ENGINEERS EACH COMMERCIAL SECTIONAL OVERHEAD GARAGE DOOR FOR INDIVIDUAL APPLICATIONS BASED ON PRODUCT & OPTIONS REQUIRED. ONE, TWO OR FOUR SPRING TORSION ASSEMBLIES ARE TYPICALLY SUPPLIED AS STANDARD. DUAL TORSION SHAFT ASSEMBLIES ARE REQUIRED WHEN IT IS TIME TO PREPARE THE OPENINGS) FOR INSTALLATION OF A WAYNE-DALTON PRODUCT, CONTACT OUR CUSTOMER SERVICE REPRESENTATIVES FOR MOUNTING PAD LOCATIONS.

STANDARD FEATURES

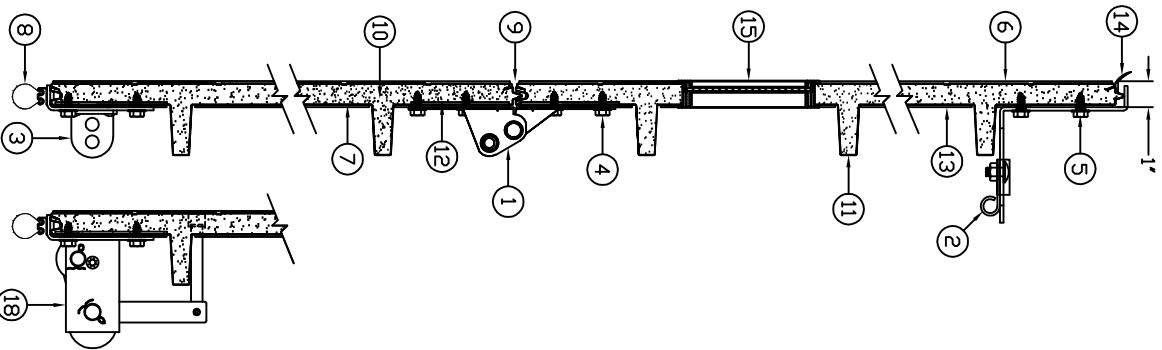
1. GRADUATED HOT-DIPPED GALVANIZED STEEL END HINGES (14 GAUGE MINIMUM).
 2. ADJUSTABLE HOT-DIPPED GALVANIZED STEEL TOP BRACKETS.
 3. HOT-DIPPED GALVANIZED STEEL BOTTOM BRACKETS WITH CABLE ATTACHMENT.
 4. (4) 1/4"-20 TEK SCREWS PER HINGE.
 5. (4) 1/4"-20 TEK SCREWS PER TOP BRACKET.
 6. EXTERIOR-HOT-DIPPED GALVANIZED STEEL .022" MINIMUM EMBOSSED NON-REPEATING RANDOM STUCCO PATTERN WITH (7) ROLL-FORMED SHALLOW HORIZONTAL RIBS, PRE-PAINTED PRIOR TO ROLL-FORMING (2 MIL PRIMER & .7 MIL WHITE POLYESTER FINISH COAT).
 7. INTERIOR-HOT-DIPPED GALVANIZED SMOOTH STEEL PRE-PAINTED PRIOR TO ROLL-FORMING (6 MIL POLYESTER WHITE FINISH COAT).
 8. GALVANIZED STEEL RETAINER WITH 'BULB-SHAPED' BOTTOM ASTRAGAL.
 9. TONGUE & GROOVE JOINT WITH JOINT SEAL.
 10. CFC FREE POLYURETHANE CORE SANDWICH-TYPE CONSTRUCTION ASHRAE CALCULATED R'-VALUE = 10.79.
 11. (2) 1-3/4" INTEGRAL ROLL-FORMED STRUTS PER SECTION.
 12. 20 GA. BUILT-IN REINFORCEMENT PLATES FOR HARDWARE ATTACHMENT.
 13. HOT-DIPPED GALVANIZED STEEL WRAP-AROUND END CAPS.
 14. GA.-SINGLE END HARDWARE (UP TO 14'-2" WIDE).
 15. GA.-DOUBLE END HARDWARE (OVER 14'-2" WIDE).
- U.S. PATENT PRODUCT 4238544 - 4339487

FREQUENTLY SELECTED OPTIONS

14. PVC TOP SECTION HEAD SEAL
15. 24x6 LITES WITH HIGH-IMPACT POLYMER FRAME:
 - 1/8" SSB GLASS
 - 1/8" DSB GLASS
 - 1/8" ACRYLIC (PLEXIGLASS)
- _____ No. SECTIONS GLAZED
- _____ No. LITES PER SECTION
16. 3" EXHAUST PORT (CENTERED BOTTOM SECTION).
17. OMIT LOCKING (INSIDE SIDE LOCK STANDARD) STANDARD SIZE RIM CYLINDER SHORT LOCK BAR (NOT AVAILABLE IN ALUMINUM FULL VIEW).
18. CABLE FAILURE DEVICE.



INTERIOR ELEVATION



CONSTRUCTION