



6720 N. Teutonia Ave. • Milwaukee, WI 53209
Phone: (414) 352-1000 • Fax: (414) 352-2093

HYDRAULIC PLUS™ RISER KIT

INTRODUCTION

The Riser Kit enables the Kelley HP Dockleveler to be installed in 23" deep pits. For those 23" deep pits (constructed per Kelley Pit Detail publication number 5443) use Riser Kit part number 184-450 which contains 5 pieces of structural tubing, a cylinder support bracket and mounting hardware (See Fig. 1).

INSTALLATION

NOTE

The following installation instructions apply to HP series docklevelers only. Use these instructions in addition to the HP Dockleveler Installation and Owner's Manual (publication number 5538).

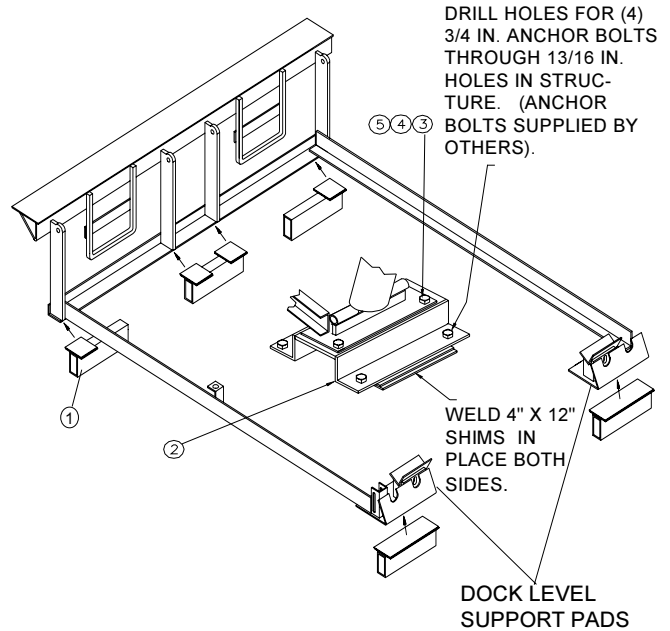
WARNING

Do not install this riser kit and dockleveler unless you have read and followed the Safety Practices, Warnings, and Installation and Operating Instructions contained in the HP Dockleveler Installation and Owner's Manual (publication number 5538). Failure to do so could result in death or serious injury.

Refer to manual for proper dockleveler shimming procedure.

1. Begin with installation of dockleveler. Refer to HP Dockleveler manual (publication number 5538).
2. When the amount of shims for correct dockleveler height in pit has been determined, weld structural tubing from riser kit to shims. Stagger shims for better weld. See Figure 2.
3. Weld shims to subframe. Refer to HP dockleveler manual 5538 for correct size of welds. Proper shims must be placed under each of the 4 rear upright supports and under both front dock level support pads, including the area under the maintenance strut bracket. See Figures 1 - 4.
4. Bolt cylinder support bracket to hydraulic cylinder mount pad using (2) 3/4 - 10 X 2 in. long bolts. See Figure 1.

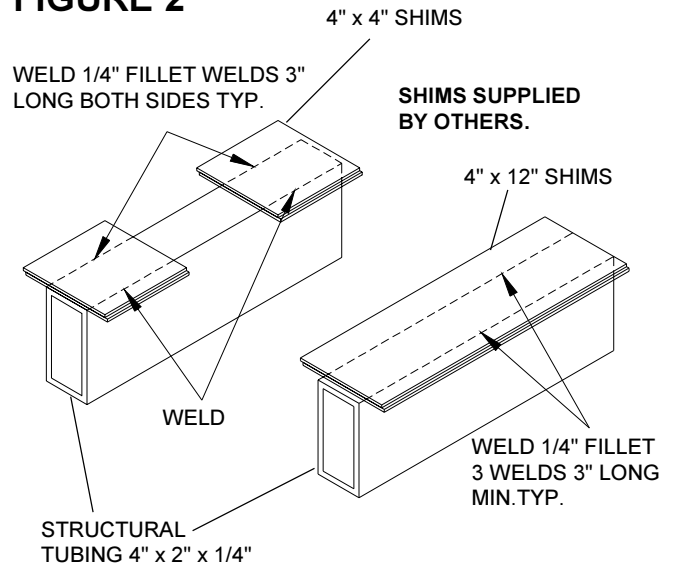
FIGURE 1



BILL OF MATERIAL FOR SHIM KIT
PART NO. 184-450 FOR HP DOCKLEVELER.

ITEM	QUANTITY	DESCRIPTION	PART NO.
1	5	TUBE 4" X 2" X 1/4 WALL X 12-1/2 LG	287-608
2	1	BRACKET, CYLINDER SUPPORT	713-349
3	2	BOLT, HEX HD 3/4 - 10 X 2" LG ZP	000-011
4	2	NUT, LOCK 3/4 - 10 ZP	000-320
5	2	WASHER, FLAT 3/4	000-060

FIGURE 2



INSTALLATION

5. Position dockleveler assembly in pit.
6. After leveler has been inserted in pit, place the dockleveler on the maintenance strut.

WARNING

Be certain, before climbing into the dockleveler pit or doing any maintenance or repair under the dockleveler, that: 1) THE MAINTENANCE STRUT AND LIP LOCK ARE SECURELY PINNED IN PLACE, and 2) the power is disconnected and properly tagged or locked off. Failure to do so could result in death or serious injury.

7. Shim under cylinder support bracket as needed. See Figure 1.
8. Weld shims to cylinder support bracket. See Figure 1.
9. Drill $3/4 \times 4-3/4$ deep holes (qty 4) directly through the $13/16$ holes in the cylinder support bracket, and install (4) $3/4 \times 4-1/4$ anchor bolts (supplied by others). See Figure 1.
10. Continue with remaining dockleveler installation as indicated in HP Dockleveler Installation and Owner's Manual (publication number 5538).

FIGURE 3

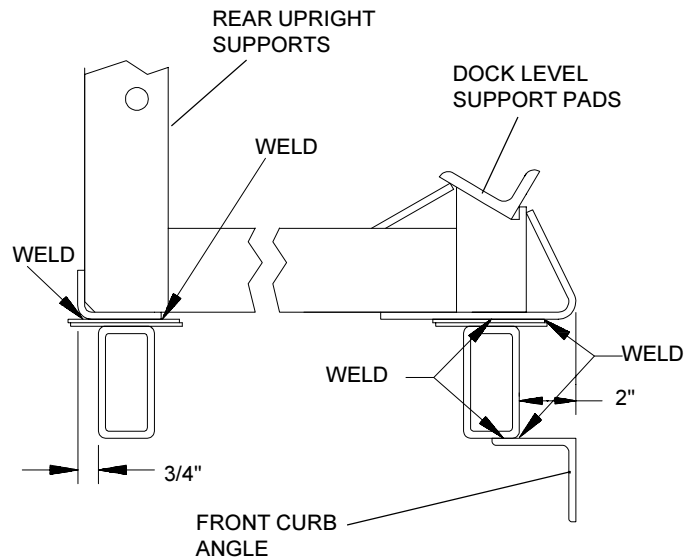


FIGURE 4

